

CONTAINER SPECIFICATIONS

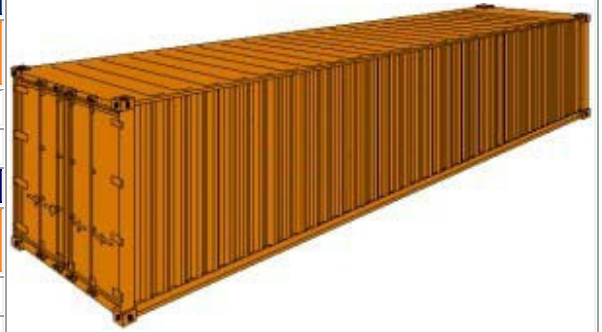
STANDARD CONTAINERS:

Standard 20'

inside length	inside width	inside height	door width	door height	capacity	tare weight	maxi cargo
19'4"	7'8"	7'10"	7'8"	7'6"	1,172CuFt	4,916lbs	47,900lbs
5.900m	2.350m	2.393m	2.342m	2.280m	33.2CBM	2,230Kg	21,770Kg

Standard 40'

inside length	inside width	inside height	door width	door height	capacity	tare weight	maxi cargo
39'5"	7'8"	7'10"	7'8"	7'6"	2,390CuFt	8,160lbs	59,040lbs
12.036m	2.350m	2.392m	2.340m	2.280m	67.7CBM	3,700Kg	26,780Kg



OPENTOP CONTAINERS:

Opentop 20'

inside length	inside width	inside height	door width	door height	capacity	tare weight	maxi cargo
19'4"	7'7"	7'8"	7'6"	7'2"	1,136CuFt	5,280lbs	47,620lbs
5.894m	2.311m	2.354m	2.286m	2.184m	32.23CBM	2,400Kg	21,600Kg

Opentop 40'

inside length	inside width	inside height	door width	door height	capacity	tare weight	maxi cargo
39'5"	7'8"	7'8"	7'8"	7'5"	2,350CuFt	8,490lbs	58,710lbs
12.028m	2.350m	2.345m	2.341m	2.274m	65.5CBM	3,850Kg	26,630Kg



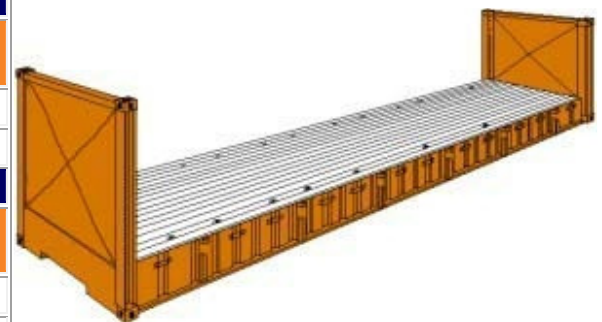
FLATRACK CONTAINERS:

Flatrack 20'

inside length	inside width	inside height	door width	door height	capacity	tare weight	maxi cargo
18'5"	7'3"	7'4"	-	-	-	5,578lbs	47,333lbs
5.620m	2.200m	2.233m	-	-	-	2,530Kg	21,470Kg

Flatrack 40'

inside length	inside width	inside height	door width	door height	capacity	tare weight	maxi cargo
39'7"	6'10"	6'5"	-	-	-	12,081lbs	85,800lbs
12.080m	2.438m	2.103m	-	-	-	5,480Kg	39,000Kg



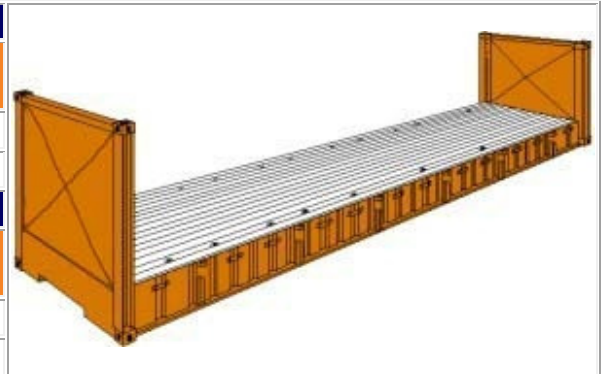
FLATRACK COLLAPSIBLE CONTAINERS:

Flatrack Collapsible 20'

inside length	inside width	inside height	door width	door height	capacity	tare weight	maxi cargo
18'6"	7'3"	7'4"	-	-	-	6,061lbs	61,117lbs
5.618m	2.208m	2.233m	-	-	-	2,750Kg	17,730Kg

Flatrack Collapsible 40'

inside length	inside width	inside height	door width	door height	capacity	tare weight	maxi cargo
39'7"	6'10"	6'5"	-	-	-	12,081lbs	85,800lbs
12.080m	2.126m	2.043m	-	-	-	5,800Kg	39,000Kg



REEFER CONTAINERS:

Reefer 20'

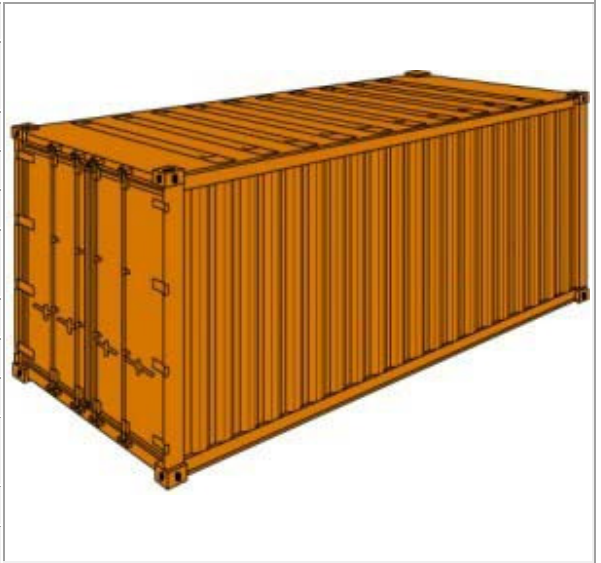
inside length	inside width	inside height	door width	door height	capacity	tare weight	maxi cargo
17'8"	7'5"	7'5"	7'5"	7'3"	1,000CuFt	7,040lbs	45,760lbs
5.425m	2.275m	2.260m	2.258m	2.216m	28.3CBM	3,200Kg	20,800Kg

Reefer 40'

inside length	inside width	inside height	door width	door height	capacity	tare weight	maxi cargo
37'8"	7'5"	7'2"	7'5"	7'0"	2,040CuFt	10,780lbs	56,276lbs
11.493m	2.270m	2.197m	2.282m	2.155m	57.8CBM	4,900Kg	25,580Kg

Reefer High Cube 40'

inside length	inside width	inside height	door width	door height	capacity	tare weight	maxi cargo
37'11"	7'6"	8'2"	7'6"	8'0"	2,344CuFt	9,900lbs	57,761lbs
11.557m	2.294m	2.500m	2.294m	2.440m	66.6CBM	4,500Kg	25,980Kg



HIGH CUBE CONTAINERS:

HIGH CUBE 40'

inside length	inside width	inside height	door width	door height	capacity	tare weight	maxi cargo
39'5"	7'8"	8'10"	7'8"	8'5"	2,694CuFt	8,750lbs	58,450lbs
12.036m	2.350m	2.697m	2.338m	2.565m	76.3CBM	3,970Kg	26,510Kg



PLATFORM CONTAINERS:

PLATFORM 20'

inside length	inside width	inside height	door width	door height	capacity	tare weight	maxi cargo
19'11"	8'0"	7'4"	-	-	-	6,061lbs	52,896lbs
6.058m	2.438m	2.233m	-	-	-	2,750Kg	24,000Kg

PLATFORM 40'

inside length	inside width	inside height	door width	door height	capacity	tare weight	maxi cargo
40'0"	8'0"	6'5"	-	-	-	12,783lbs	86,397lbs
12.180m	2.400m	1.950m	-	-	-	5,800Kg	39,200Kg

